

David Ebony  
the nyc top ten

[Ronald Feldman](#) | [Paula Cooper](#) | [Pace Wildenstein](#) | [Gregory Gallery](#)  
[Perspective Fine Arts](#) | [David McKee Gallery](#) | [Holly Solomon Gallery](#) | [Yoshii Gallery](#)  
[Mary Boone](#) | [Caren Golden](#) | [Go Here For Past Reviews](#)

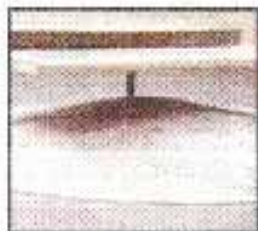
---



## Ronald Feldman

### Leon Golub

Large "pseudo-metaphysical" paintings



## Paula Cooper

### Robert Grosvenor

Tombs from some brutal and violent civilization



## Pace Wildenstein

### Julian Schnabel

A prominent figure in the 80s artworld



## Gregory Gallery

### James Hilleary

One of the original members of the Washington Color School



## Perspective Fine Arts

**Anne Connell**

Miniatures inspired by  
Medieval art and Surrealism



## David McKee Gallery

**Vija Celmins**

more eerie than anything  
you're likely to see



## Holly Solomon Gallery

**Y.Z. Kami**

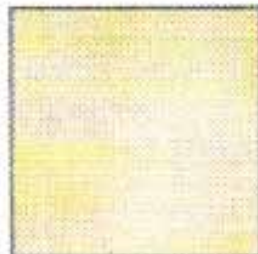
An ode to the fleetingness  
of youth



## Yoshii Gallery

**Portia Munson**

Munson went way over the top  
with this installation



## Mary Boone

**Ellen Gallagher**

Subtle commentary on  
racial stereotypes

dauid ebony

the nyc top ten



*The Kiss*

Oil and gold leaf on panel  
12 x 12 inches

## Perspective Fine Arts

Anne Connell at Perspective Fine Arts

19 E. 71 St. , NYC 10021

Tel. (212) 226-4990

Feb. 22-March 22

Wendy S. Hoff, Director

Anne Connell, an artist from Portland, Oregon paints miniatures inspired by Medieval art and Surrealism. While her work is an eclectic mix, referencing everything from illuminated manuscripts to Man Ray, it has nothing to do with nostalgia. Her gold-leaf surfaces and neatly etched lines are certainly pleasant to look at, but they do not entirely disguise hints of subversion. Rather like a fortune teller, Connell makes her rich vocabulary of signs seem strangely portentous.

next | home