



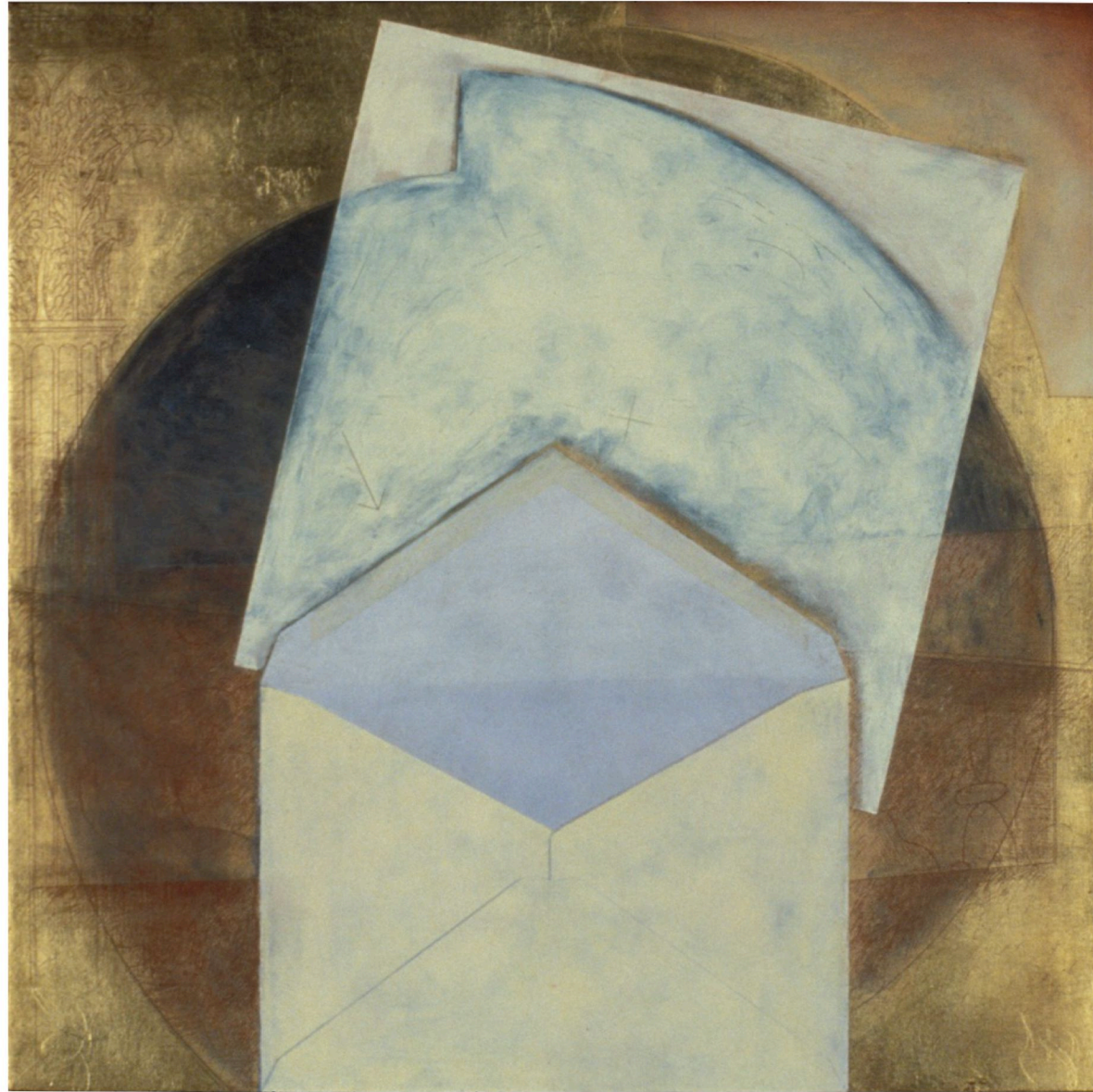
envelopes | windows
Anne Connell

envelopes | windows

Anne Connell

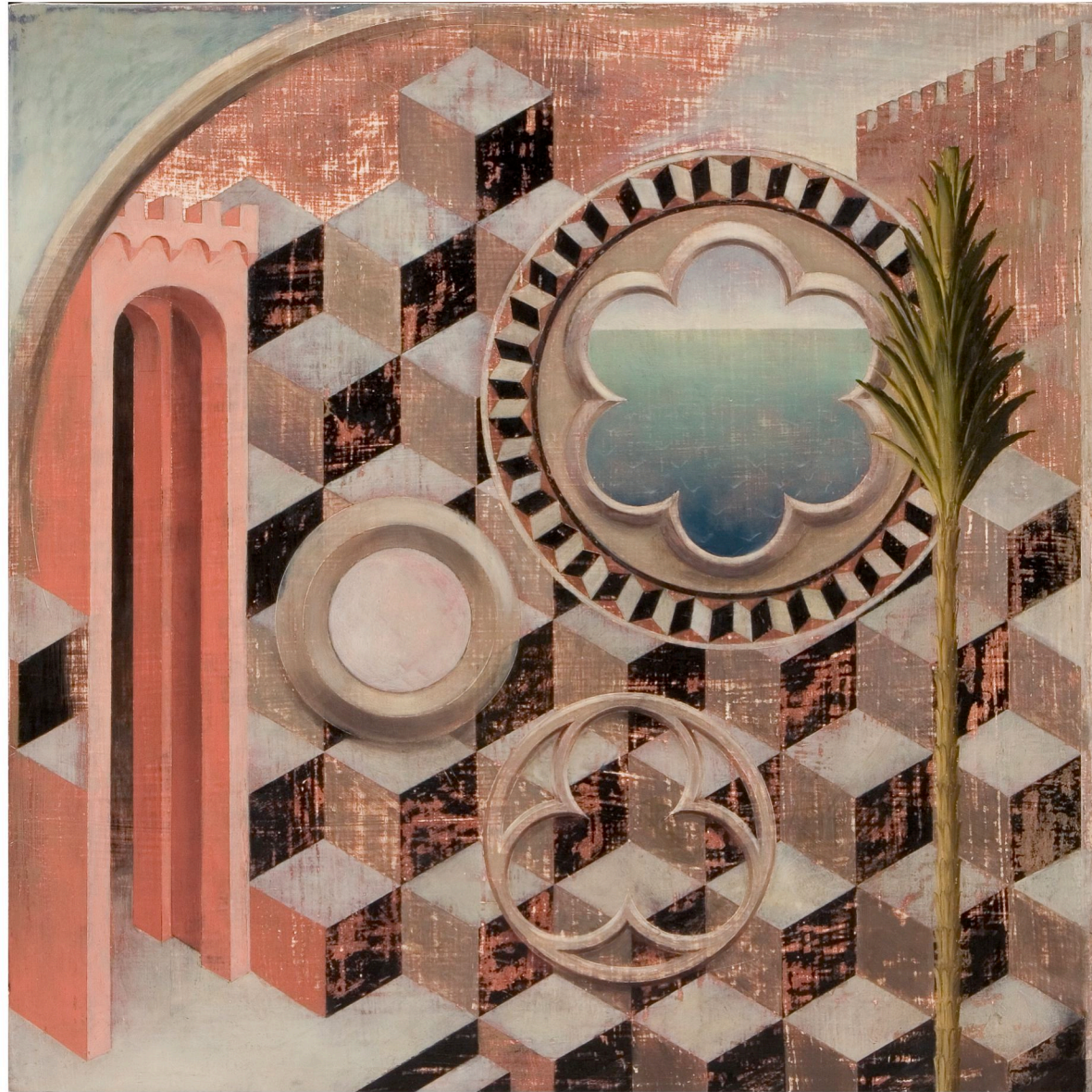


Alphabet 2007 | oil and gold leaf on panel | 26 × 26 inches

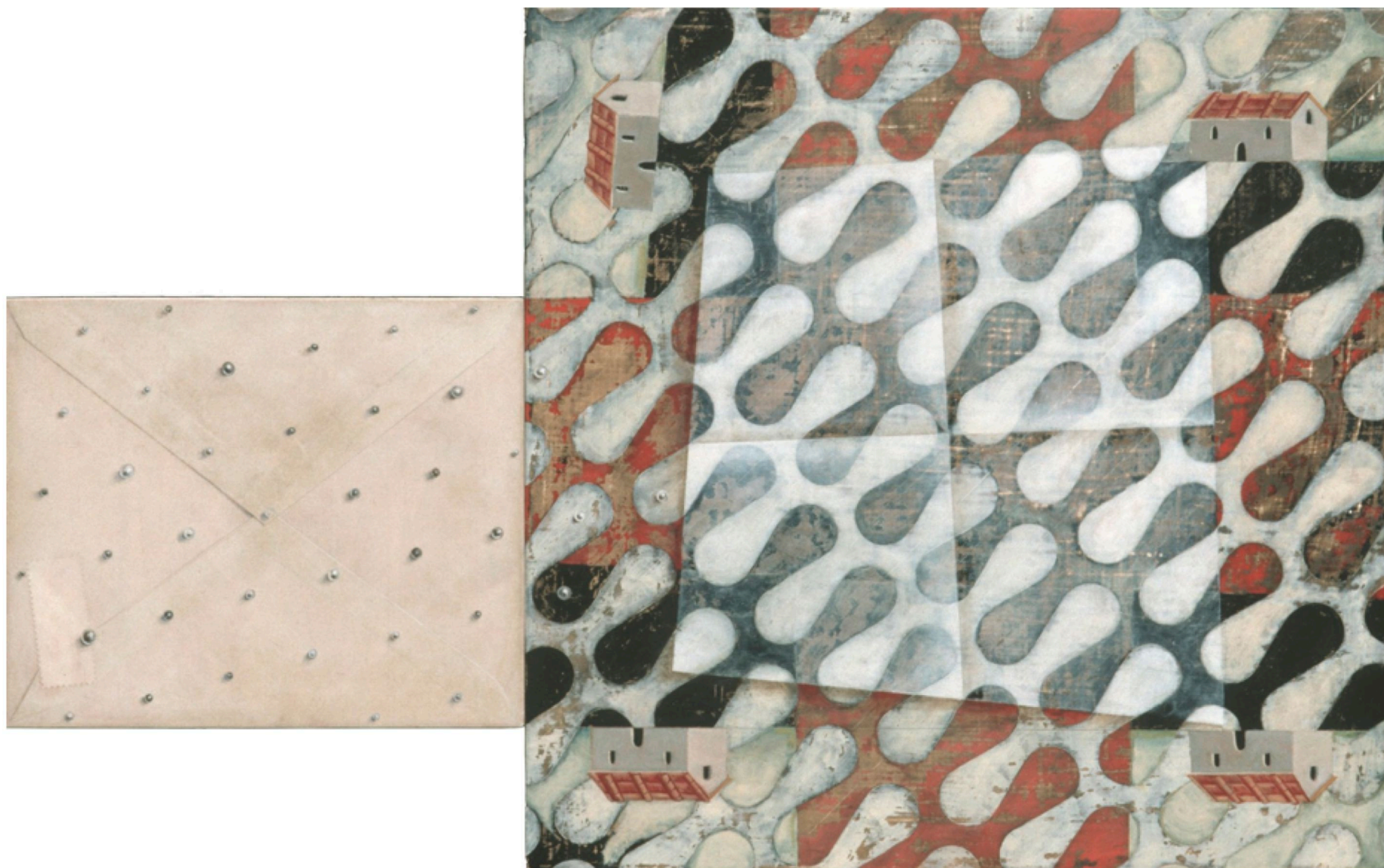


Arcanum Arcanorum 1991 | oil and gold leaf on panel | 12 × 12 inches





The Clear Hyaline 2004 | oil on panel | 18 × 18 inches
➤ *The Branching-Stone* 2005 | oil on panel | 11⁷/₈ × 14³/₄ inches



Composition: Autumn 2002 | oil on panels | 11¾ × 18⅞ inches



Contrivance in Red 2003 | oil and gold leaf on panel | 11³/₄ × 11⁷/₈ inches

Ducciesco 2009 | oil on panel | 12 × 12 inches

Escarpment (detail) 2007 | oil and gold leaf on *pastiglia* on panel | 10³/₈ × 12 inches 🖼️





Imbrication and Umbrage 2000 | oil and gold leaf on panel | 9 × 9 inches



A Loggia 2000 | oil on panel | 9 × 9 inches



Missive 1995 | oil and gold leaf on panel | 11½ × 11½ inches

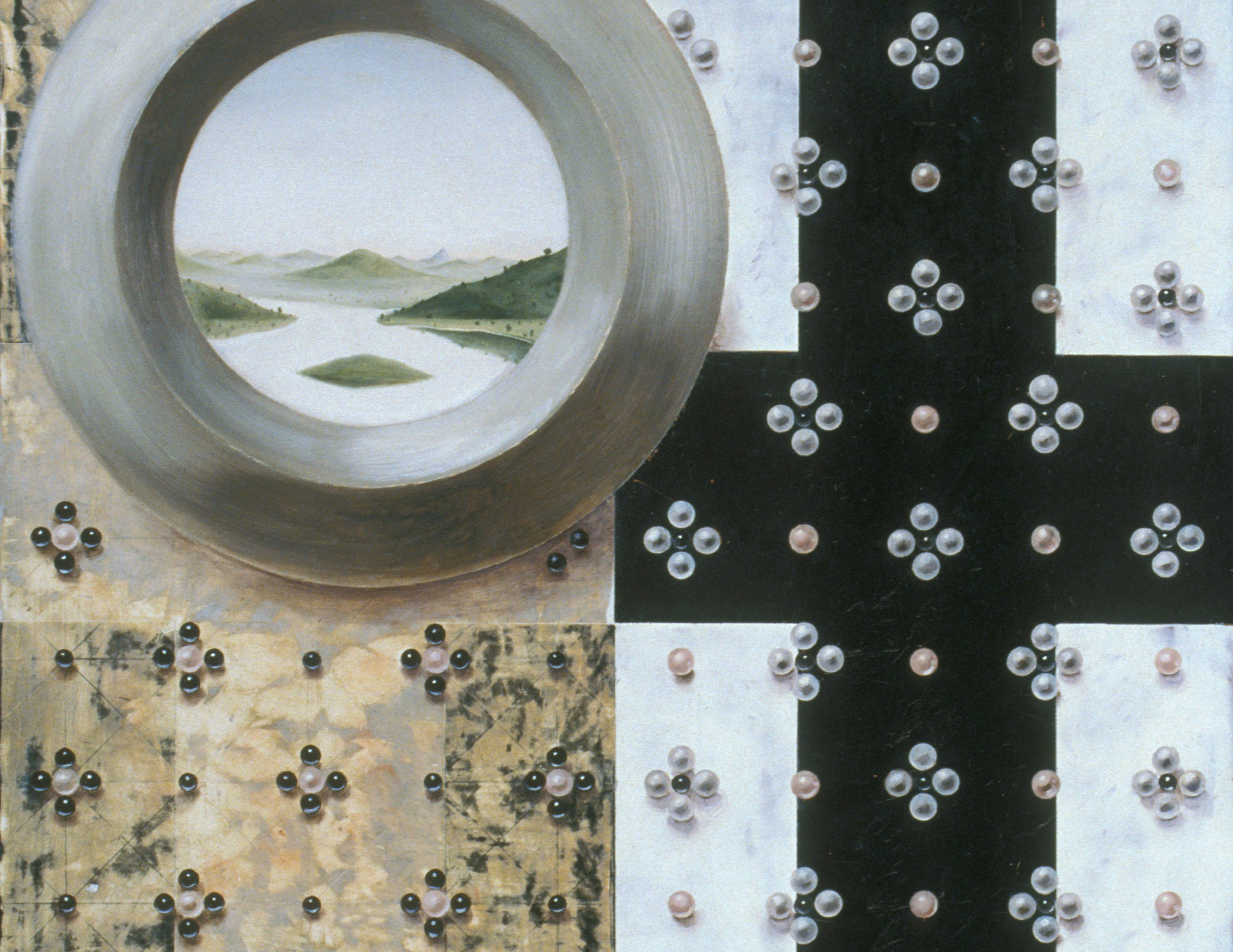


Mnemosynum 2011 | 8 × 8 inches | silverpoint on oil on panel



The Oculus 2004 | oil on panel | 12 × 12 inches

Parted Per Pale (detail) 2007 | oil on panel | 12 × 12 inches







Saint Nicholas of Tolentino 1996 | oil on panel | 9 × 9 inches

➤ *Pear* 2006 | oil on panel | 7¼ × 8¾ inches



The Sea Again 1999 | oil on panel | 9 × 9 inches



Souvenir 2001 | silverpoint on oil and gold leaf on panels | 6 × 11¾ inches

Spes 2003 | oil on panels | 10 × 16 inches



Study with Juniper 2012 | gouache and sepia on marbled paper mounted on board | 12 × 12 inches



Study with Pyramid 2010 | gouache on marbled paper mounted on board | 12 × 12 inches



Study with Towers 2010 | gouache on marbled paper mounted on board | 12 × 12 inches



A Sudden Leap 2001 | silverpoint on oil on panels | 8½ × 18 inches



The Token 2009 | oil and gold leaf on panel | 7 $\frac{7}{8}$ × 8 $\frac{1}{2}$ inches





A Young Lady of Fashion 2000 | oil on panel | 10½ × 15 inches
➤ *Turn Me Over* (detail) 2004 | oil and gold leaf on panel | 15 × 15 inches

envelopes | windows

front cover: *Spes* (detail)

back cover: *Composition: Autumn* (detail)

